

**“Delray”**

**Dual-Mount Vanity**

**Features**

- Genuine Vitreous China
- Dual-Mount - Drop-In -or- Vessel
- Single Compartment
- Rectangular Shaped Bowl



**Dimensions**

Outer: 21-1/2" x 18" x 6-3/4"

Inner: 18-1/8" x 11-1/2" x 4"

Drop-In Installed Lip Height: 3-1/2"

Model Number	Description	Colors / Finishes
CH640	Drop-In -or- Vessel Sink	White
CH650	Drop-In -or- Vessel Sink	Bisque

**Included Components**

- Cut-out template

Available Colors



**Optional Accessories**

- Pop-Up Drain
- Mounting Clips

**Codes / Standards Applicable**

Specified model meets or exceeds UPC certification



**Product Specification**

The vanity sink shall be 21-1/2" in width and 18" in length, with an overall depth of 6-3/4" and an inner bowl depth of 4". Sink shall be a single compartment with rectangular bowl, composed of Vitrious China. Sink shall be installable as a drop-in with 3-1/2" lip, or vessel. Sink shall be Continental Model "Delray".

**TECHNICAL INFORMATION**

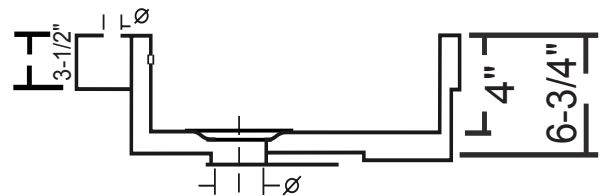
Fixture*	
Basin Area	16-3/4" x 11-1/8"
Drop-In Installed Lip Height	3-1/2"
Water Depth	4"
Drain Hole	1 7/8" D
*Approximate measurements for comparison only.	

*Please note: All porcelain sinks are fired at a very high temperature; final dimensions may vary slightly.*

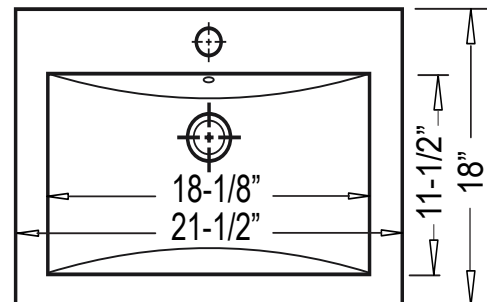


**Installed Product Image**

**Side View**



**Top View**



**Product Diagram**